



Haringey Community Safety – Performance Overview

Community Safety Partnership
12th December 2013

How crime is recorded

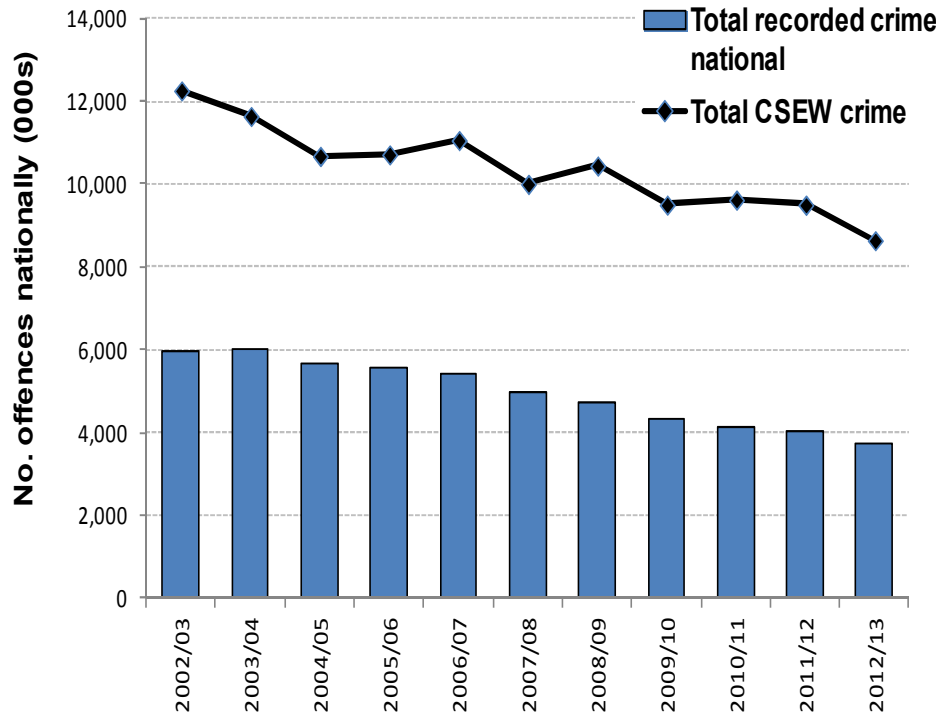
- Two methods of reporting crime:
 - Police recorded crime – crime reported to the police
 - Through the Crime Survey in England and Wales (CSEW) – this shows that about 40% of crime not reported



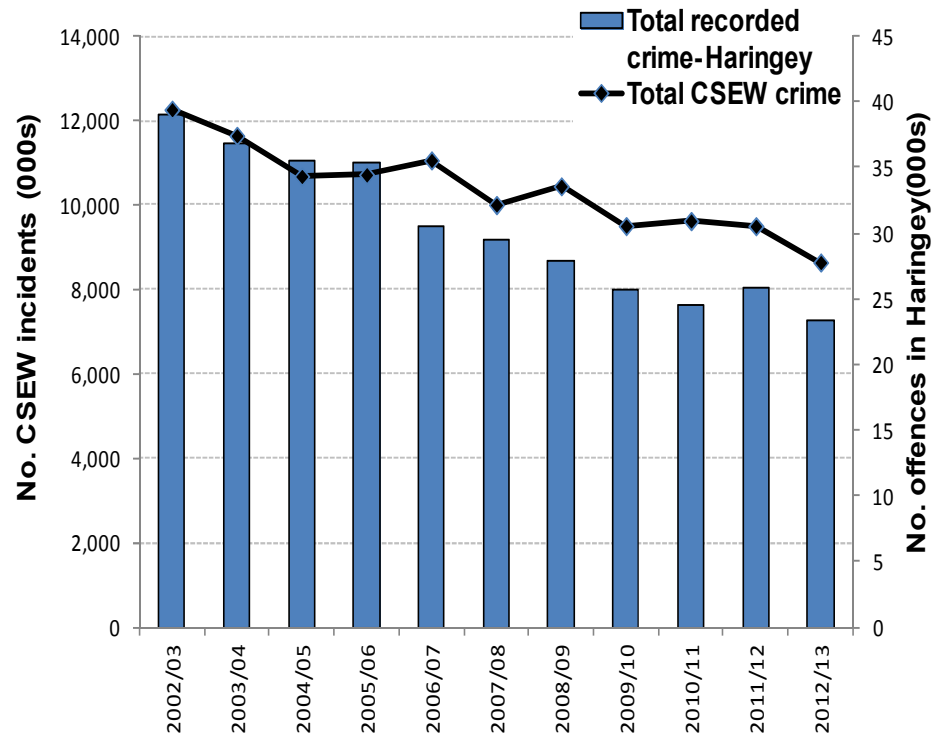
Haringey Council

Overall level of all crime

Trends in national police recorded crime and Crime Survey in England & Wales (CSEW) 2002/03 to 2012/13 (thousands)



Trends in Haringey recorded crime and Crime Survey in England & Wales (CSEW) 2002/03 to 2012/13 (thousands)



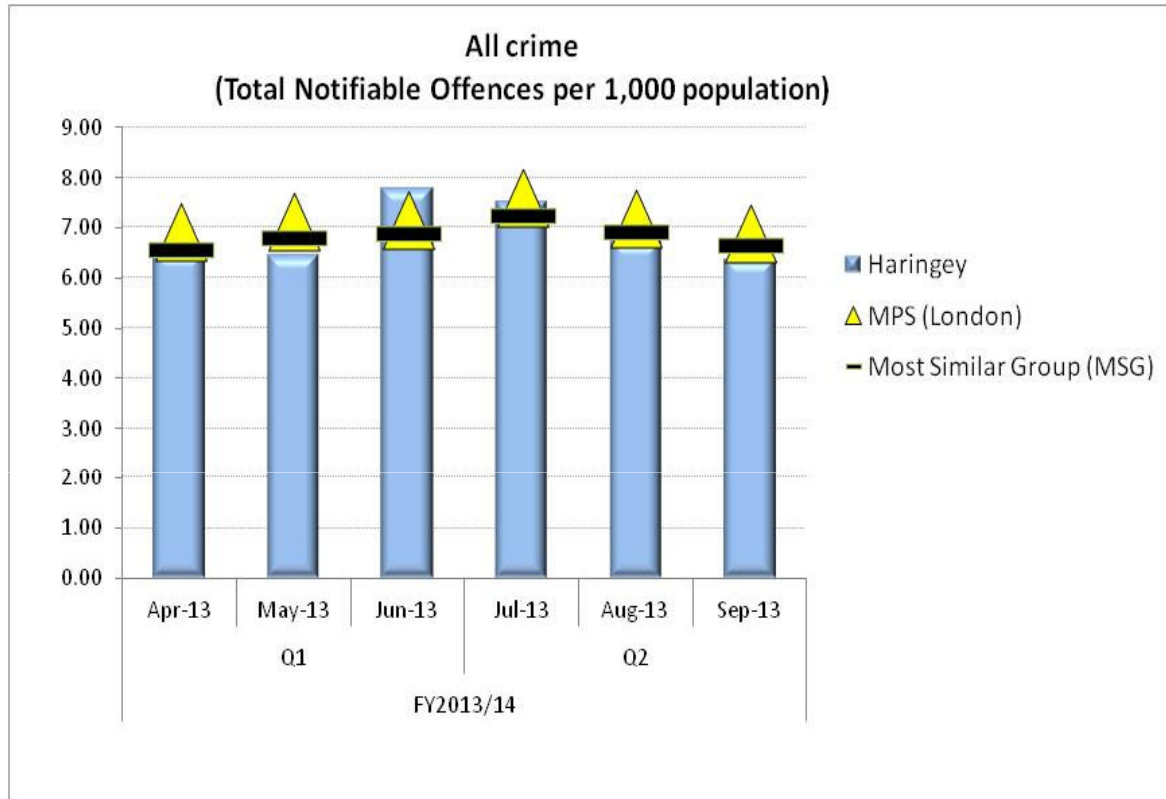
- With the exception of 2011/12, crime in Haringey has fallen consecutively every year since 2002/03, an overall reduction of over 40%

www.haringey.gov.uk



Haringey Council

Overall crime April - September 2013



CSP	All crime	
	No.	Rate
MPS - Southwark	15,980	55.3
MPS - Lambeth	16,670	54.7
MPS - Hackney	13,479	54.5
MPS - Hammersmith & Fulham	9,465	51.9
MPS - Waltham Forest	11,061	42.6
MPS - Haringey	10,567	41.4
Sussex - Brighton & Hove	11,248	41.2
MPS - Lewisham	11,302	40.8
MPS - Brent	11,954	38.3
MPS - Wandsworth	11,676	37.9
MPS - Greenwich	9,684	37.9
West Midlands - Birmingham	38,459	35.8
Sussex - Hastings	3,192	35.4
West Midlands - Wolverhampton	8,637	34.6
MPS - Barnet	10,960	30.7

- 12% reduction for Apr-Sep 2013 compared to the same period last year
- Haringey's reduction is higher than either London (8%) or most similar group of authorities (4%)
- Haringey's rate of 41.4 per thousand pop. is below London (42.8) and in line with MSG (41.0)



Haringey Council

Haringey's progress against the MOPAC 7 indicators

MOPAC7 – 22nd November 2013 - (performance based on rolling 12 month performance rather than year to date)

Crime Type	Target	FY 11/12	Current Rolling 12 months	% Change
MOPAC7		15,686	12,215	-22.10%
Burglary	-5%	3,649	2,698	-26.10%
Criminal Damage	0%	2,748	1,857	-32.40%
Robbery	-5%	1,497	921	-38.50%
Theft From Motor Vehicle	-5%	3,040	2,519	-17.10%
Theft Of Motor Vehicle/TDA	0%	1,284	826	-35.70%
Theft From Person	-7.90%	1,204	1,427	18.50%
Violence With Injury	-6%	2,264	1,967	-13.10%



Haringey Council

Progress against the MOPAC 7 indicators

- 14% reduction for Apr-Sep 2013 compared to the same period last year
- Haringey had a higher reduction than London (7%) and MSG increased by 5%
- Haringey's rate (23.8 per thousand pop.) is above London (21.6) but below it's neighbouring CSPs (24.2) – ranked 10th highest in London



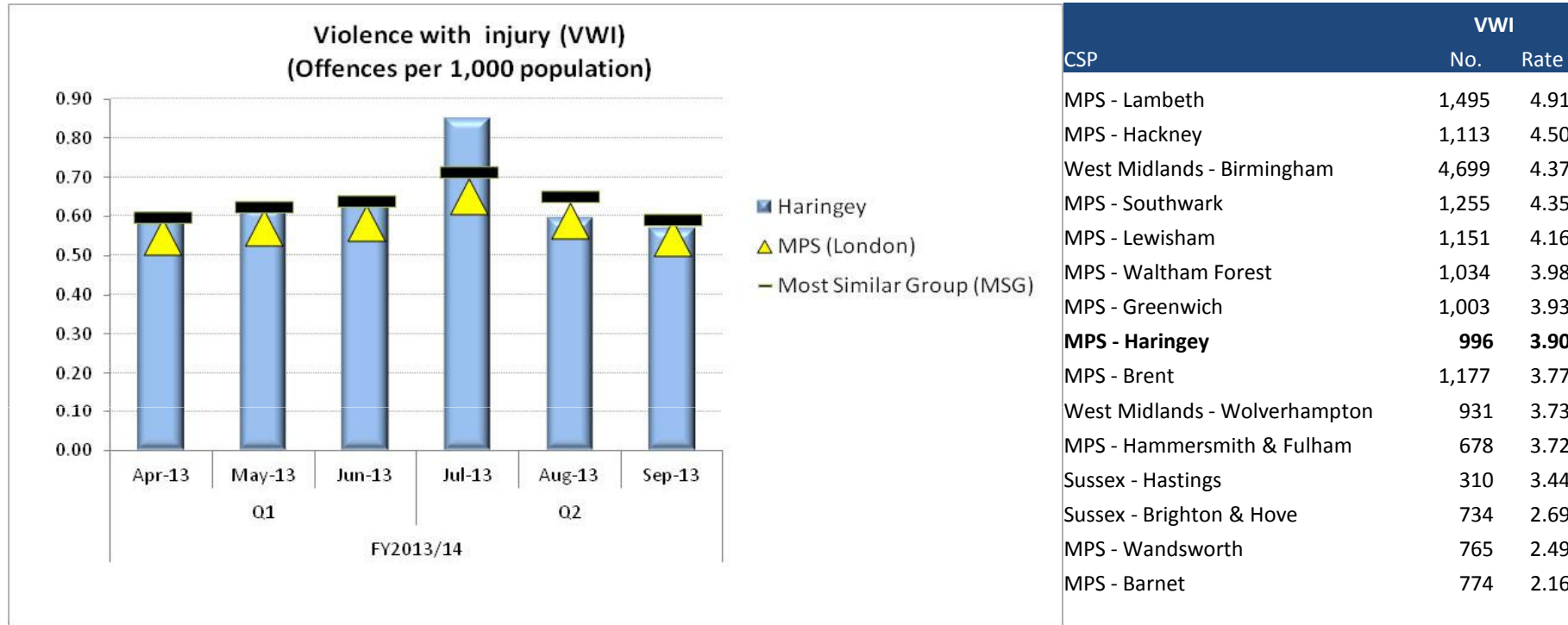
Issues identified in the 2012/13 Crime Audit

- Continuing to focus on acquisitive crime
- High proportion of serious violent crime committed by offenders aged 18-24
- Over half of those accused of gang related crime are aged between 15 to 17
- Youth re-offending
- Tackling domestic violence
- Tackling anti-social behaviour
- Focusing on crime hotspots
- Higher rates than London of drug and alcohol misuse
- Increasing confidence in policing



Haringey Council

Serious violent crime

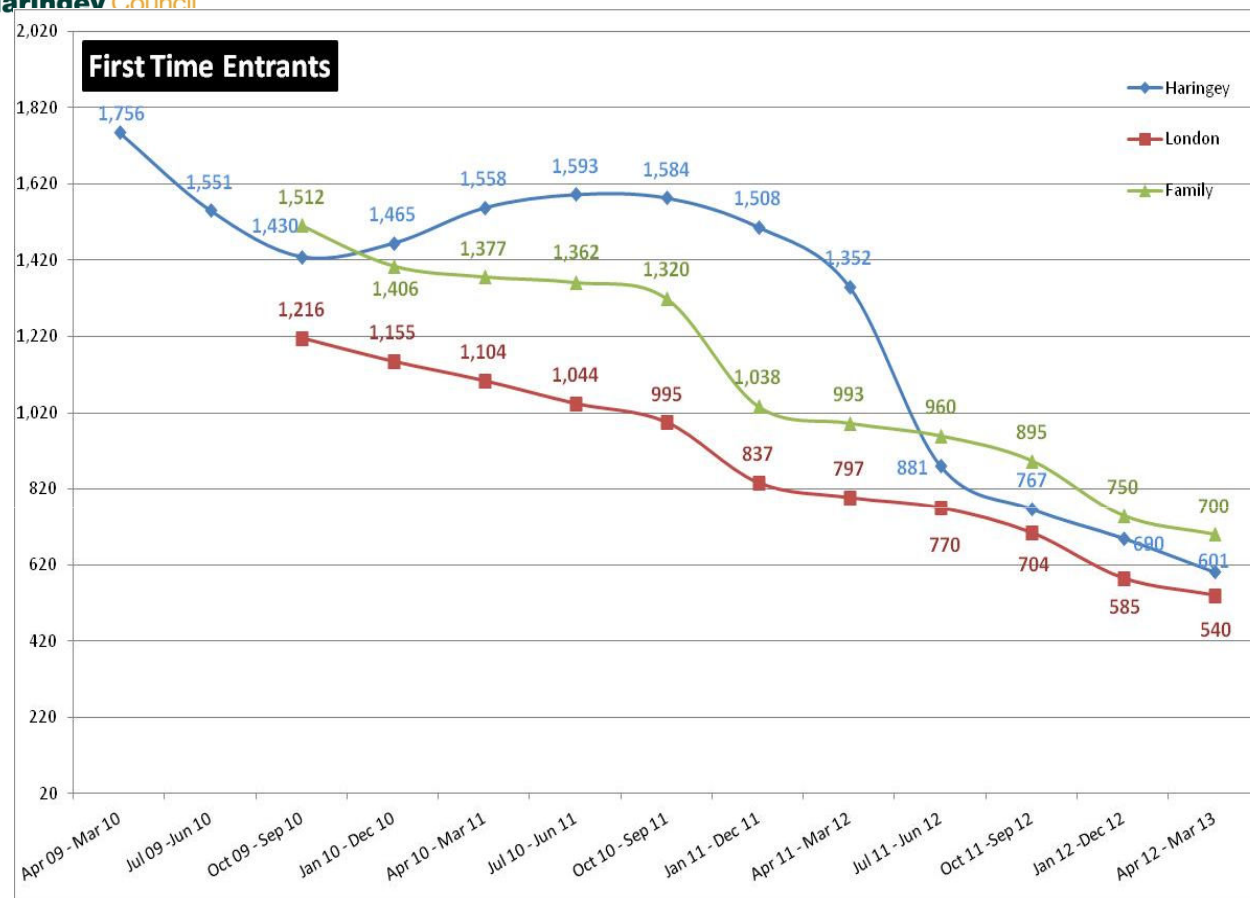


- Overall reduction (18%) compared to the same period last year however
- Serious youth violence increased by 7.5% during the same period



Haringey Council

Youth Offending



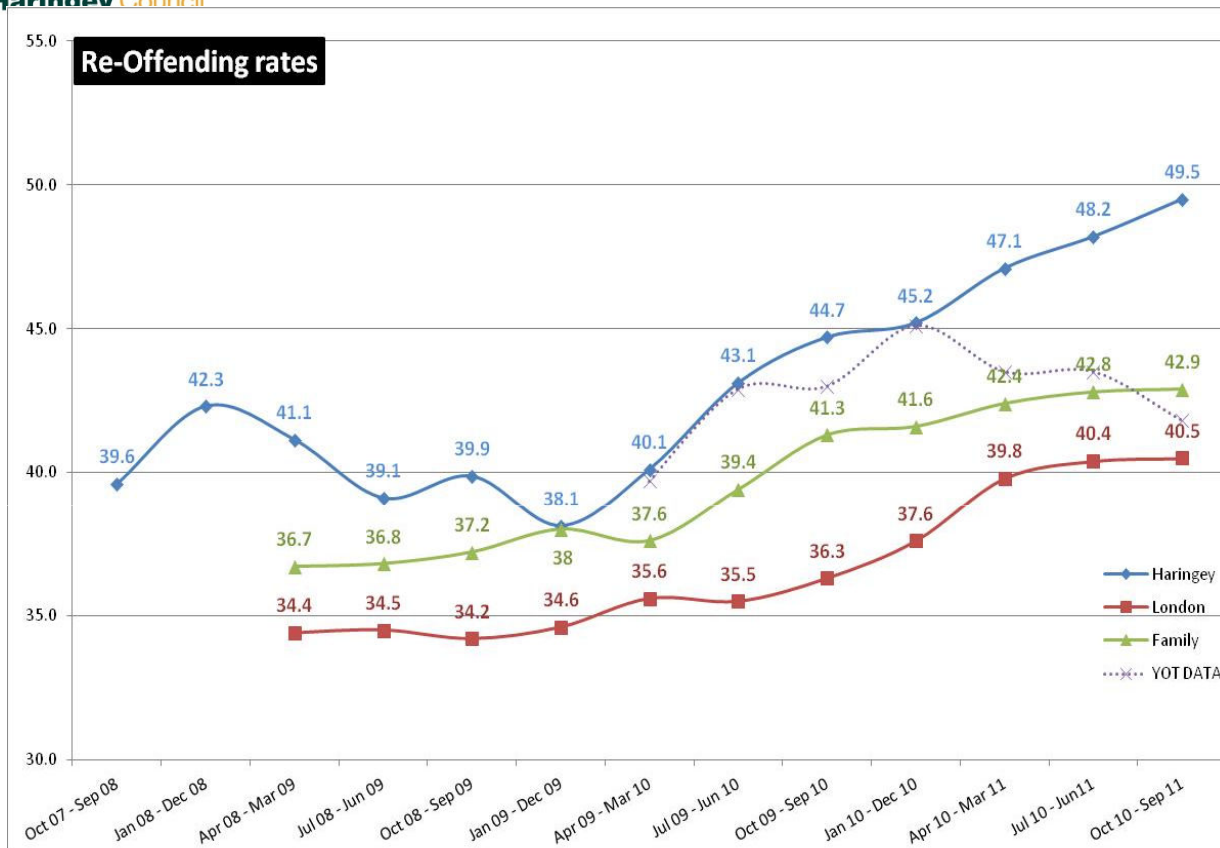
YOT	FTE	
	No.	Rate
Islington	125	857.5
Lambeth	190	815.7
Greenwich	190	799.7
Lewisham	186	760.9
Hammersmith and Fulham	90	760.0
Westminster	93	672.3
Newham	207	657.3
Tower Hamlets & City of London	142	654.0
Brent	187	644.7
Croydon	235	628.0
Southwark	139	621.9
Camden	96	621.1
Enfield	205	620.6
Haringey	143	600.6
Wandsworth	110	569.5
Kensington and Chelsea	54	547.7
Waltham Forest	129	538.3
Hounslow	117	517.1
Hackney	110	499.2
Hillingdon	131	485.8
Barking and Dagenham	98	472.5
Merton	77	456.0
Ealing	133	432.9
Redbridge	125	418.1
Bexley	99	406.6
Barnet	131	382.7
Kingston-upon-Thames	52	376.3
Sutton	68	364.3
Bromley	108	363.9
Richmond-upon-Thames	50	322.1
Havering	73	311.3
Harrow	62	261.7

- The rate of first time entrants to the Youth Justice System aged 10-17 has reduced by over half (55.5%), from 1352 (228 youths) to 601 (143 youths) per 100,000 of 10-17 population
- 3rd lowest rate in comparator group



Haringey Council

Youth Reoffending



YOT	Reoffending % of cohort
Hammersmith and Fulham	49.5
Haringey	49.5
Lewisham	48.7
Waltham Forest	47.9
Hackney	46.1
Croydon	45.3
Islington	45.3
Kensington and Chelsea	44.3
Harrow	44.0
Brent	43.3
Southwark	43.2
Hounslow	43.0
Barking and Dagenham	42.9
Lambeth	42.0
Merton	41.5
Camden	41.2
Newham	41.1
Bromley	40.3
Hillingdon	38.3
Richmond-upon-Thames	37.9
Redbridge	37.2
Wandsworth	36.9
Tower Hamlets & City of London	36.2
Ealing	35.2
Westminster	35.1
Barnet	35.1
Bexley	34.1
Greenwich	33.2
Enfield	32.9
Kingston-upon-Thames	31.8
Havering	30.8
Sutton	27.8

- 49.5% of offenders in the Oct 10 to Sep 11 cohort have reoffended, joint highest in London
- Currently conducting data matching exercise with Police to verify levels (local data shows a lower percentage)
- Dealing with a much smaller but offending-entrenched caseload with more complex issues



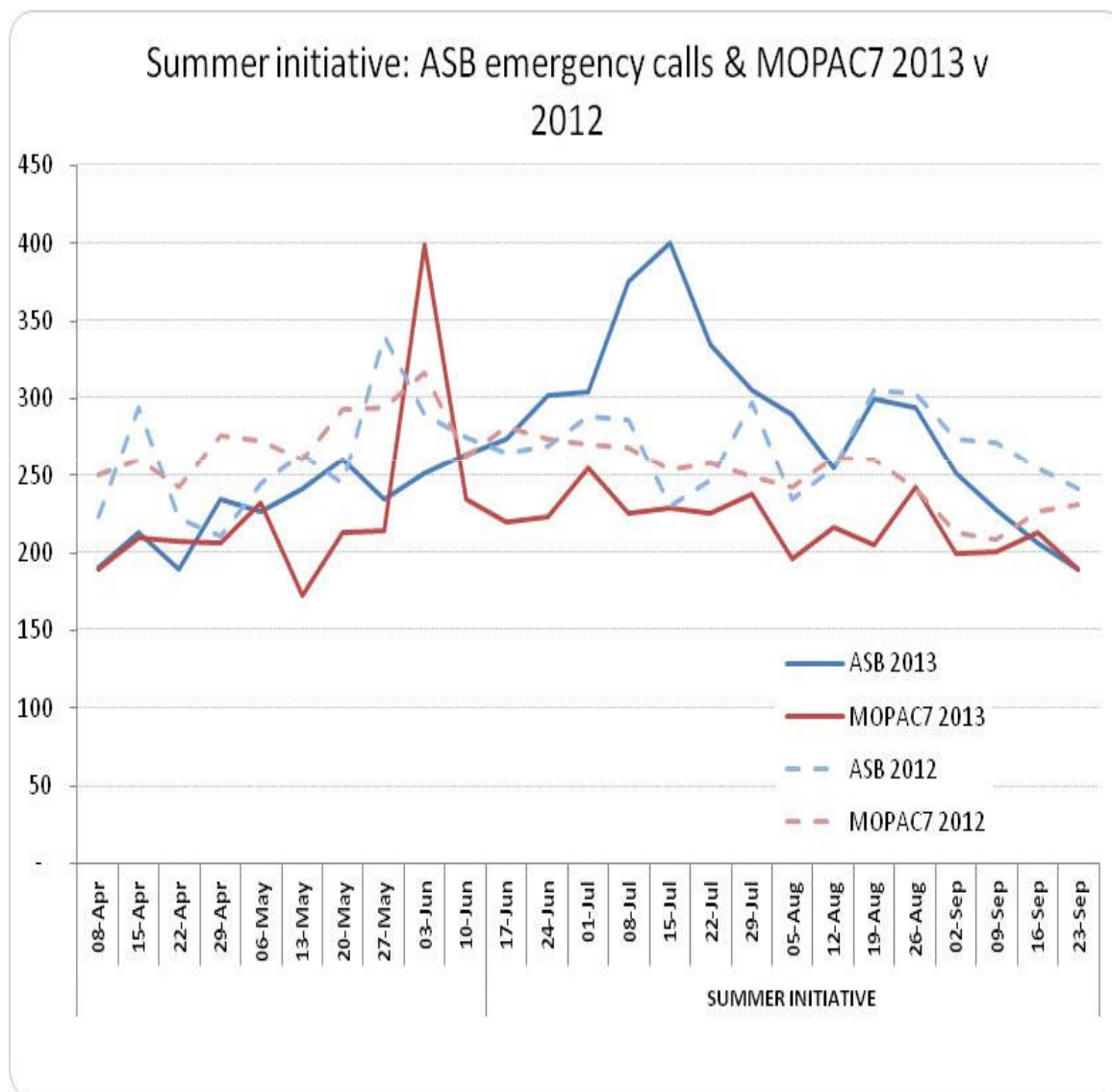
Tackling domestic violence

- Reported domestic violence in Haringey increased by 1.5% (14 additional offences) the 10th lowest in London (Hammersmith & Fulham highest 11% reduction & Redbridge 22.4% highest increase)
- Haringey's sanction detection rate is 45.4%, ranked 16th lowest in London
- Haringey's rate (3.9 per thousand pop.) is above London (3.5) and in line with MSG (3.8)



Haringey Council

Tacking anti-social behaviour



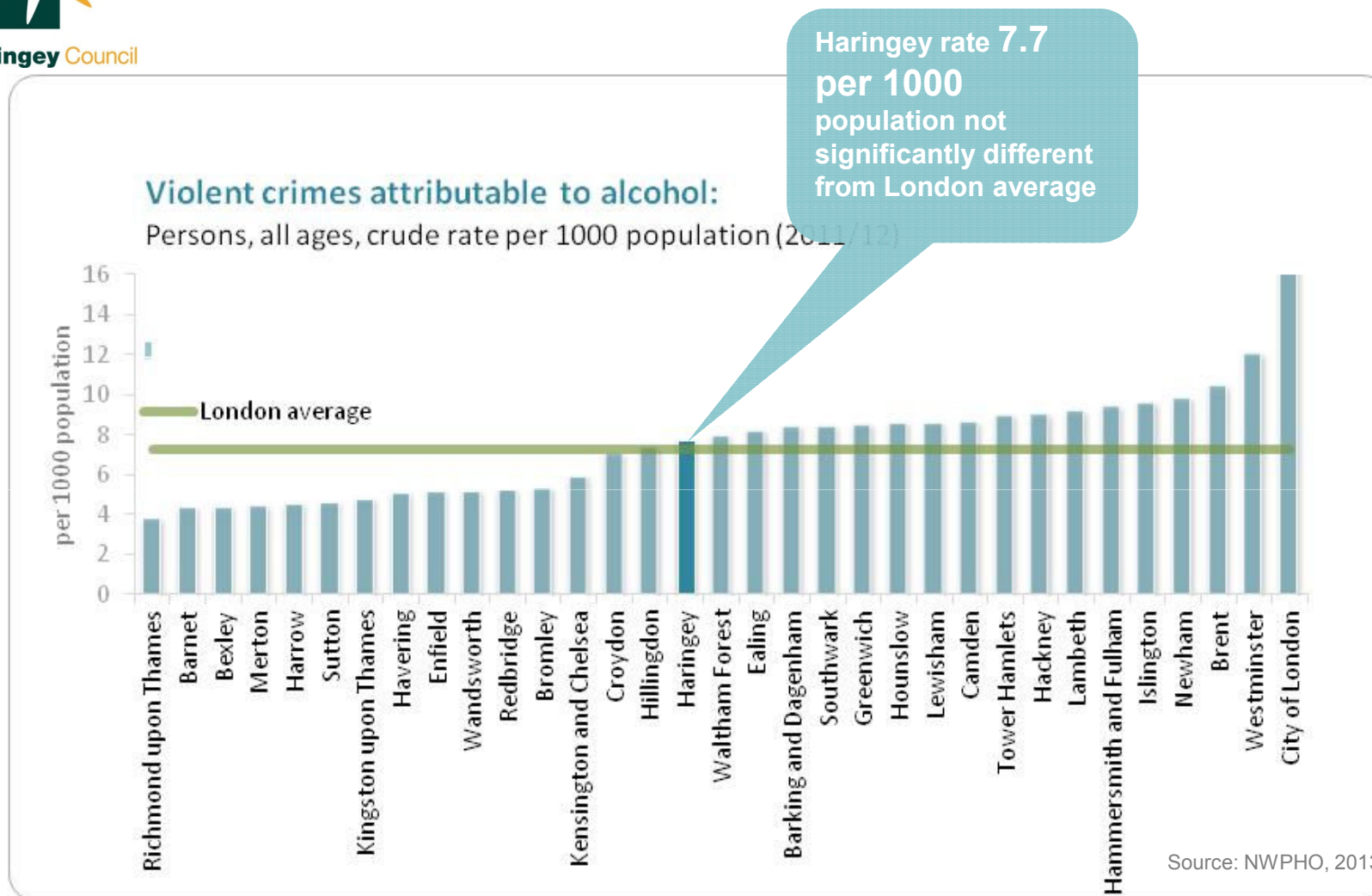
Key Points

- During Summer initiative ASB increased by 7.1% to 4,312 incidents (286 additional)
- On average there were 287 ASB incidents each week during the Summer initiative, 19 more than for the same period last year
- MOPAC7 offences reduced by 12.4% from 3,743 to 3,280 (463 fewer offences)
- MOPAC7 had 219 offences on average each week, 31 fewer than for the summer period in 2012
- ASB peak of 400 incidents seen between 8 July and 22 July can be linked to the extremely hot weather conditions throughout the country during this period
- Rowdy/Inconsiderate behaviour spiked during this period however overall there was a slight reduction of 3% (82 fewer incidents) in Rowdy/Inconsiderate behaviour during this period
- Rowdy/nuisance neighbours increased significantly by almost half (46%) to 823 incidents (260 additional)
- The last 6 weeks of the summer initiative from 19 August to 29 Sep saw a reduction in ASB of 11% or 181 fewer incidents)



Haringey Council

Alcohol related violence: FY 2011/12



1 in 2 victims of violence believe the offender to be under the influence of alcohol (Source: ONS 2012)

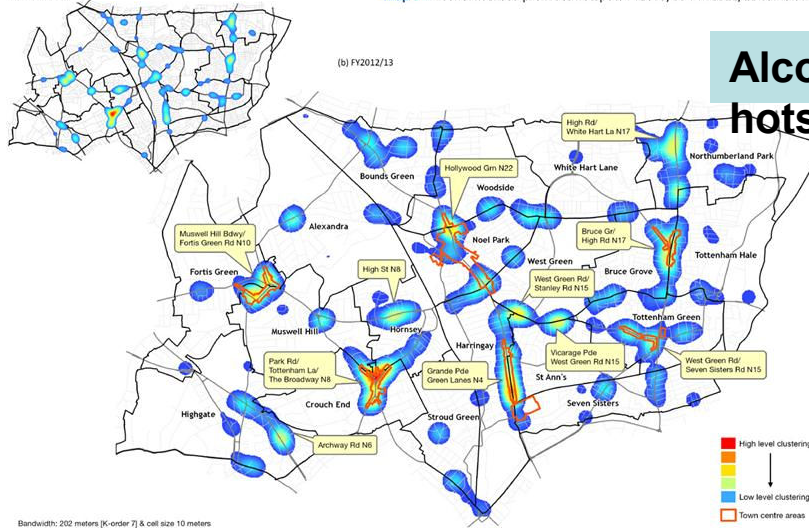


Haringey Council

Alcohol related violence: FY 2012/13

(a) FY2005/06

Map 6 - Alcohol licensed premises hotspots FY2005/06 v FY2012/13 cumulative

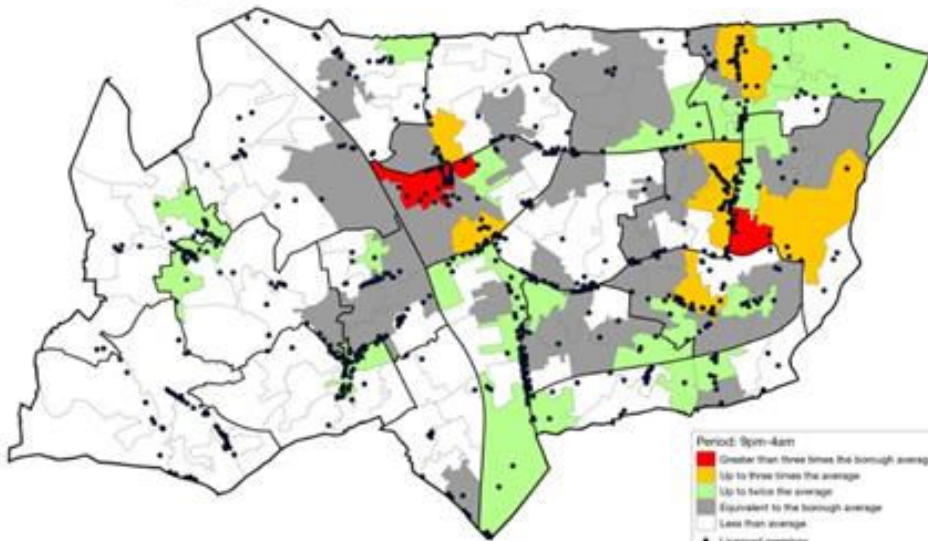


Alcohol licensed premises hotspots

Bandwidth: 202 meters [K-order 7] & cell size 10 meters
 Classification: Incremental mean [2]
 HI rate: 100% 1002 out of 696 events geocoded

Night-time economy related violence

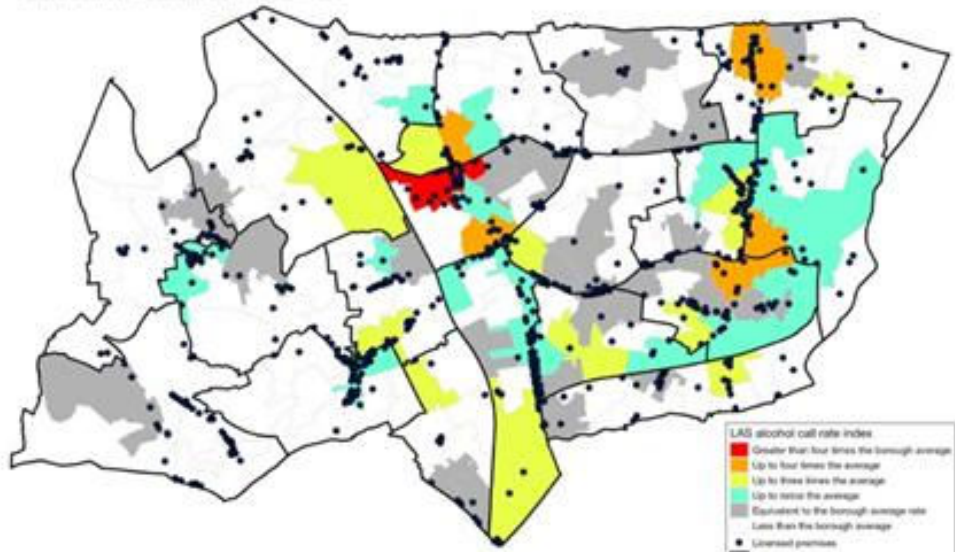
Night-time economy violence index aggregated by Lower Super Output Area (LSOA)
 April 2012 - March 2013
 Source: MPS crime records, Haringey Intelligence Unit



Period: 0pm-4am
 Greater than four times the borough average
 Up to four times the average
 Up to three times the average
 Up to twice the average
 Equivalent to the borough average
 Less than average
 Licensed premises
 Wards
 LSOA classified within the 'average group' include those up to 20 per cent above or below the 0.28 rate for Haringey as a whole.

Alcohol related ambulance call-outs

Alcohol related ambulance calls index aggregated by Lower Super Output Area (LSOA)
 April 2012 - March 2013
 Source: London Ambulance Service (LAS) alcohol related calls



LAS alcohol call rate index
 Greater than four times the borough average
 Up to four times the average
 Up to three times the average
 Up to twice the average
 Equivalent to the borough average rate
 Less than the borough average
 Licensed premises
 Wards
 LSOA classified within the 'average group' include those up to 20 per cent above or below the 0.28 rate for Haringey as a whole.



Haringey Council

Community confidence

Key performance indicator	2012/13 Outturn / Baseline	Q1 Target	Q2 Target	Q3 Target	Q4 Target	2013/14 Target	Performance Q1 2013/14	Performance Q2 2013/14
Community confidence in dealing with crime and anti-social behaviour (percentage of residents who feel the council and police are dealing with crime and anti-social behaviour effectively)	54%	59%	59%	59%	59%	59%	54%	58%
Community confidence in policing	50%	55%	55%	55%	55%	(55%)	55%	59%

- Q2 performance for dealing with crime and ASB has increased by 4% to 58% within 1% of its target changing from red to amber status (within 5% of its target)
- Community confidence in policing has also risen by 4% to 59% in Q2 exceeding its target by 4% notable increase from 50% 12 months ago



Haringey Council

Overall Assessment

- To be added